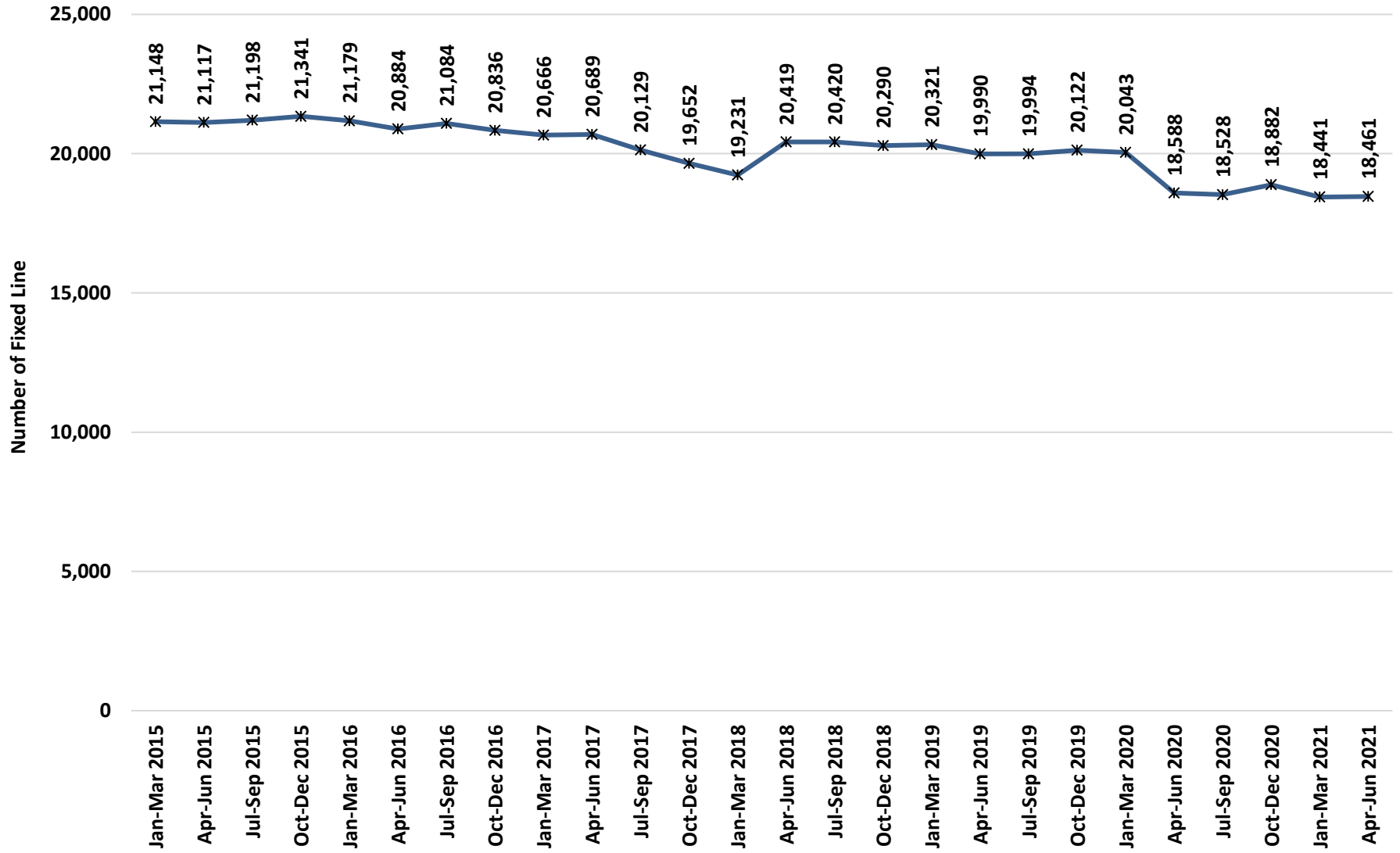


Service subscriptions	31 st March 2016	30 th June 2016	30 th September 2016	31 st December 2016	31 st March 2017	30 th June 2017	30 th September 2017	31 st December 2017	31 st March 2018	30 th June 2018	30 th September 2018	31 st December 2018	31 st March 2019	30 th June 2019	30 th September 2019	31 st December 2019	31 st March 2020	30 th June 2020	30 th September 2020	31 st December 2020	31 st January 2021	30 th June 2021	Penetration per 100 inhabitants 31 st January 2021
Fixed Lines Service	21,179	20,884	21,084	20,836	20,666	20,689	20,129	19,562	19,231	20,419	20,420	20,290	20,321	19,990	19,994	20,122	20,043	18,588	18,528	18,882	18,441	18,461	18.65
Mobile Cellular Service	149,486	147,764	153,619	151,857	163,693	165,285	166,849	167,282	169,660	173,540	175,650	178,946	183,638	186,966	188,549	193,672	193,342	187,984	182,797	183,498	178,561	182,484	184.40
Internet access Service	33,722	32,072	34,489	35,381	38,479	77,483	79,349	83,628	89,752	90,408	90,970	97,869	101,197	103,735	107,650	116,888	116,784	112,345	114,014	119,010	122,066	132,651	134.04
Total International Internet Bandwidth Capacity (Mbps) (Upload and Download)	4,411	4,570	5,190	5,500	6,714	6,994	6,994	7,294	8,494	10,084	10,134	10,688	12,548	14,200	15,740	16,970	17,870	17,870	17,870	17,990	18,140	19,190	N/A
Total Data Traffic (GB) (Uploaded and Downloaded)	1,680,760	1,552,722	1,875,442	2,177,738	2,328,365	2,768,567	3,016,515	3,124,755	3,372,485	5,292,273	4,204,659	4,432,962	4,365,642	4,784,308	5,349,620	5,879,823	6,019,181	6,300,515	6,280,947	6,671,160	8,000,520	8,172,646	N/A

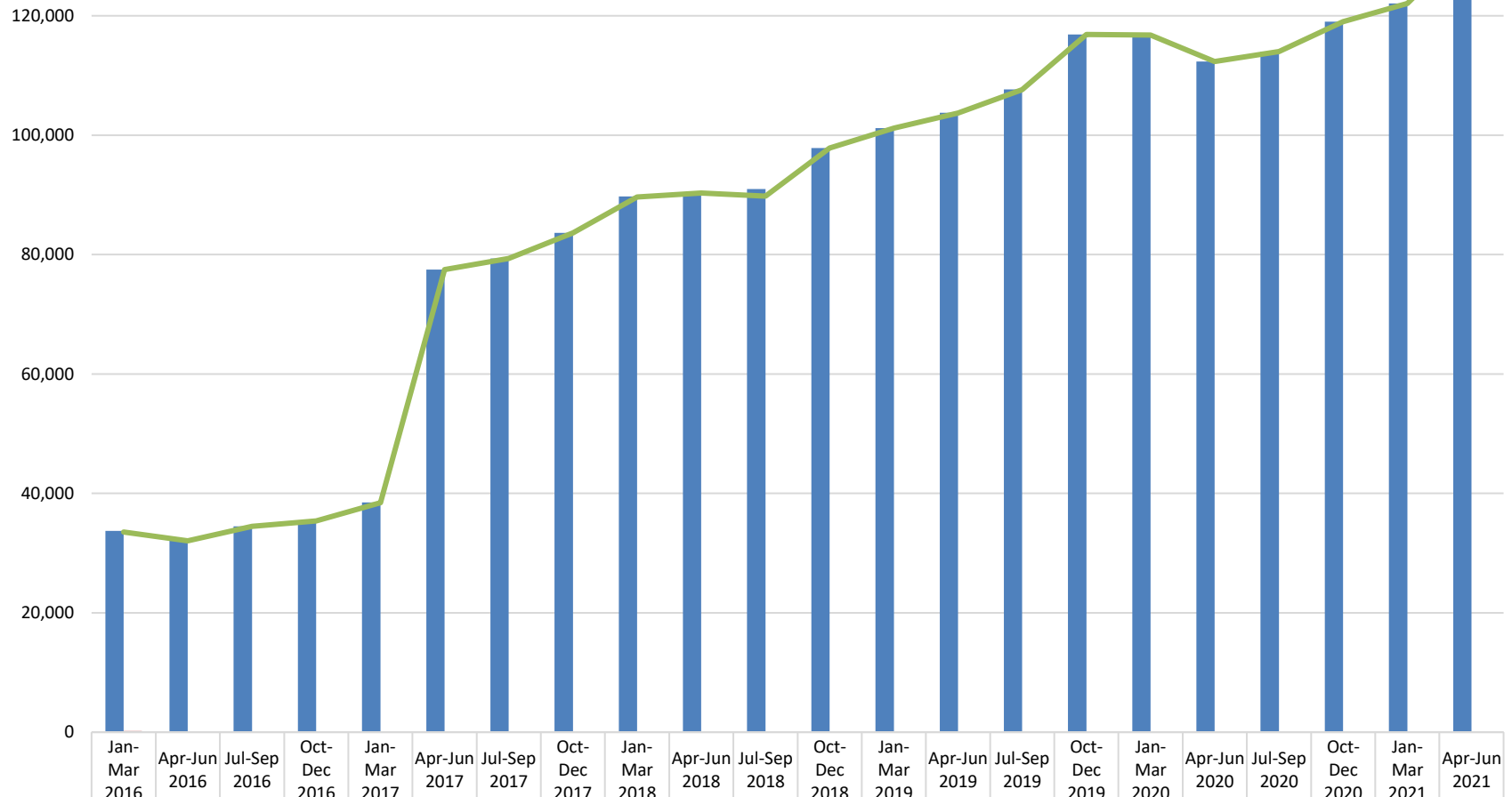
Population - 98,963 at 31st December 2020

Source - <https://www.nbs.gov.sc/downloads/data-acquisition-census/population-and-vital-statistics/2020>

Fixed line Subscriptions as at 30th June 2021

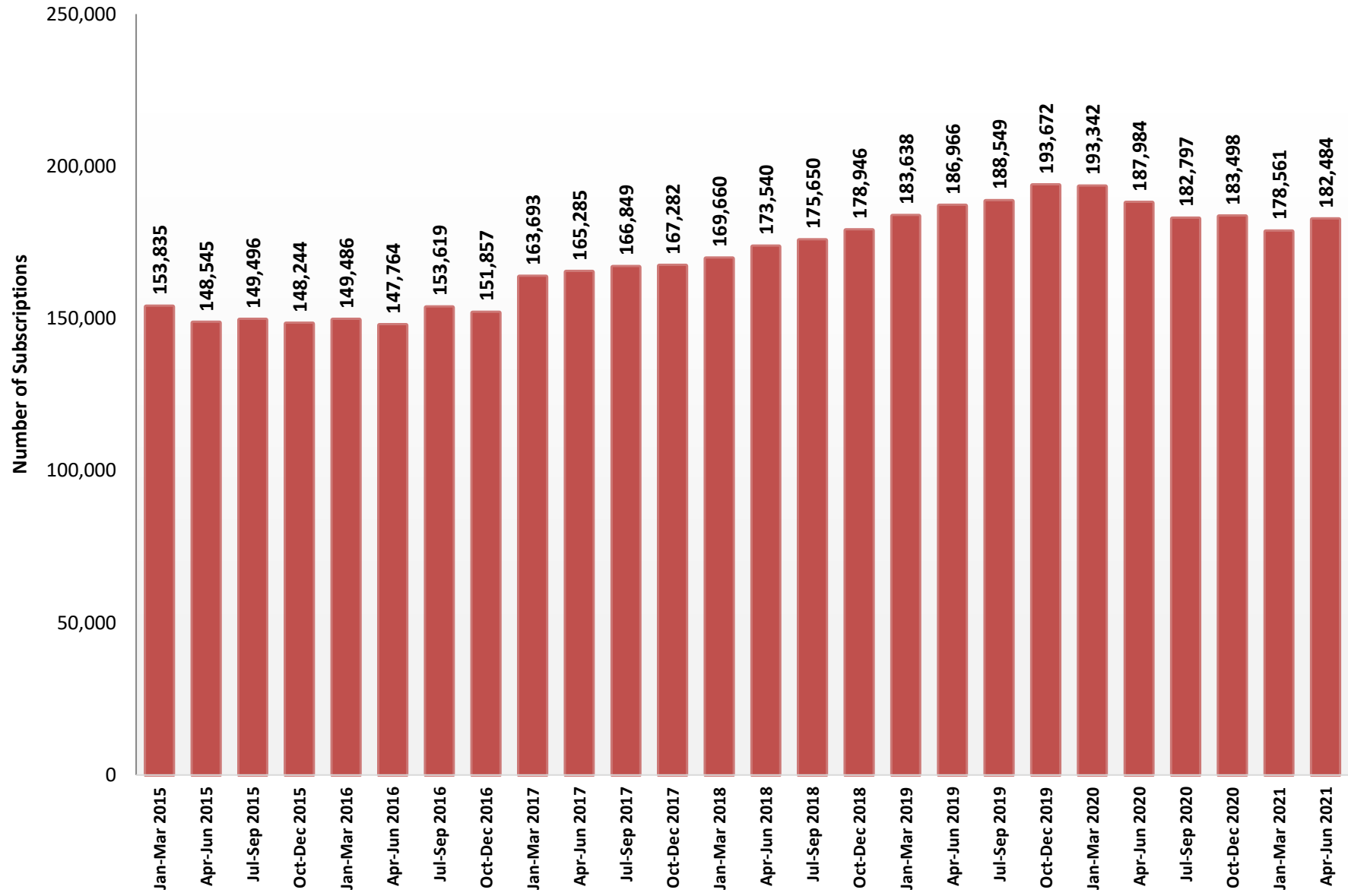


Internet Subscriptions as at 30th June 2021

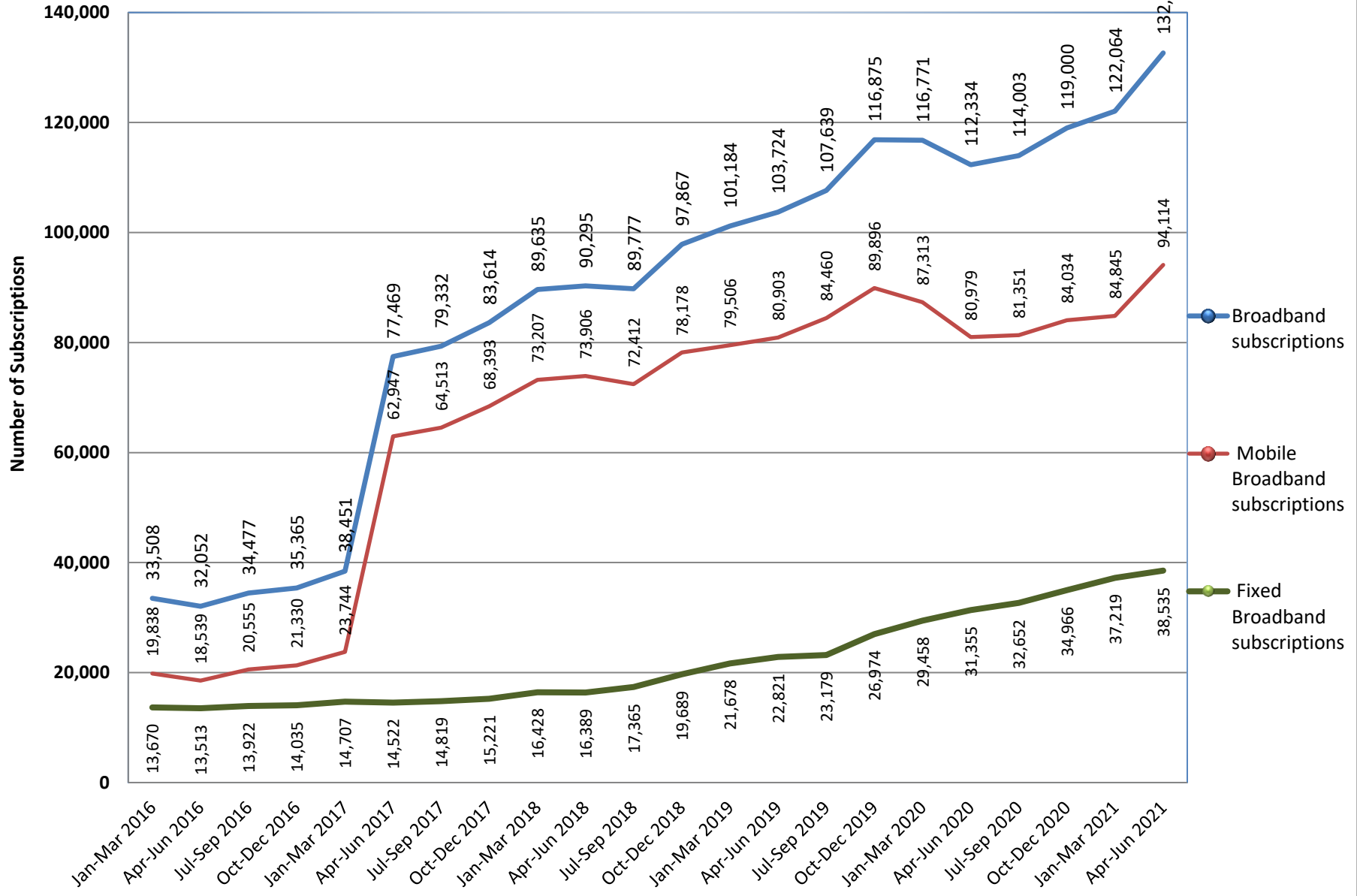


■ Total Internet subscriptions	33,722	32,072	34,489	35,381	38,479	77,483	79,349	83,628	89,752	90,408	90,970	97,869	101,197	103,735	107,650	116,888	116,784	112,345	114,014	119,010	122,066	132,651
■ Narrowband subscriptions	214	20	12	16	13	14	15	14	14	16	16	16	13	11	11	13	13	11	11	10	2	2
■ Broadband subscriptions	33,508	32,052	34,477	35,365	38,451	77,469	79,332	83,614	89,635	90,295	89,777	97,867	101,184	103,724	107,639	116,875	116,771	112,334	114,003	119,000	122,064	132,649

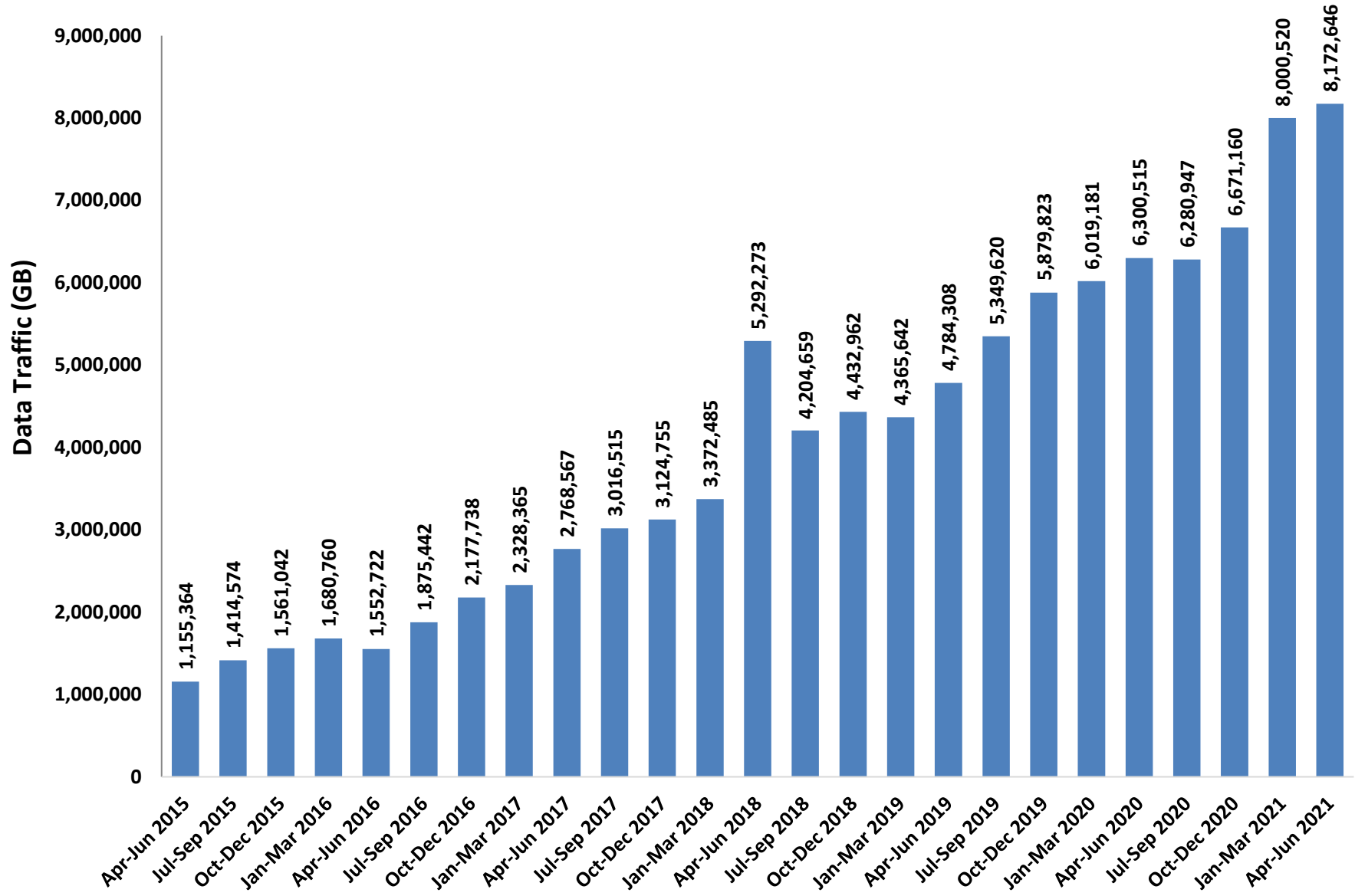
Mobile Subscriptions as at 30th June 2021



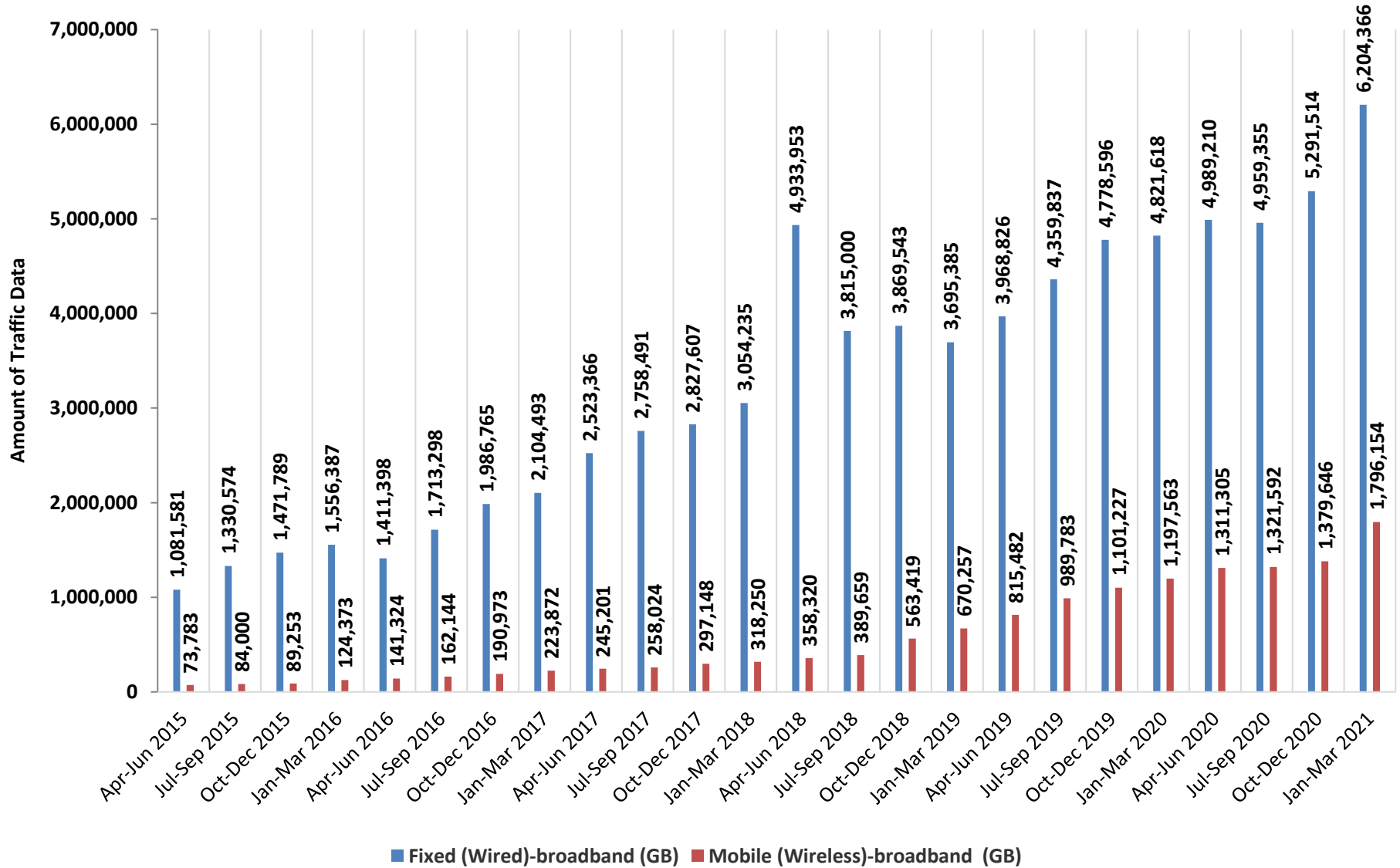
Broadband Subscriptions as at 30th June 2021



Total Data Traffic Uploaded and Downloaded as at 30th June 2021



Mobile (Wireless) Broadband and Fixed (Wired) Broadband Traffic Data as at 31st March 2021



International Internet bandwidth as at 31st March 2021

